

Philomath Scout Lodge, Inc. Philomath, Oregon

Phone: 541-929-7619
www.philomathscoutlodge.org

NOVEMBER 2017

We would like to take this opportunity to offer  PSL newsletter readers an easy transition to receiving your PSL newsletters by email (if you like). Just drop us a note at psli@peak.org or call 541-929-7619 to request your email address be added to our electronic mailing list. We'll take it from there!

Mortgage Challenge

The Philomath Scout Lodge is a community asset that sits on 58 acres of beautiful wetland and natural habitat property within the city limits. We host a wide range of events at the facility—they range from the 50 kids & counselors who spent the day exploring the acreage with an Avery House Nature Center summer program, a recent Eagle Scout Court of Honor, 3-day Quilt Show, OSU & school district training sessions, celebrations of life memorials, dances, and weddings!

When the lodge opened its doors in 2008, it carried a mortgage of \$950K. Today, through the ongoing community support and rental income, the balance of the mortgage stands at just under \$332K.

In September the Board of Directors was presented with a “pay down the mortgage” challenge by a local anonymous donor. The donor is willing to “match” all donations that are directed toward the mortgage, up to a total amount of \$70K.

This means for every dollar the lodge can raise for the mortgage payoff, it will be matched by the donor—up to \$70K! This challenge will run through the month of November. If you are willing to assist us meet this challenge, contributions can be mailed to PSL at PO Box 662, Philomath OR 97370, or contact the office at 541-929-7619. Thank You!

Upcoming Events at the Lodge: come join us!

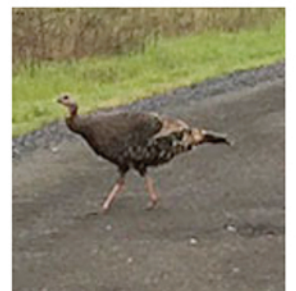
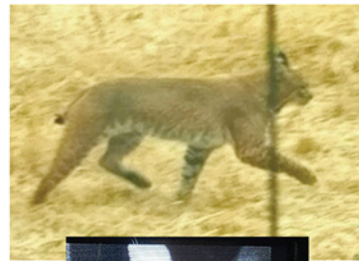
(details at www.philomathscoutlodge.org)

Oct 28, 9:00 am	Work Party to winterize lodge
Nov 10, 5:30 pm	Bunco & Poker Fundraiser
Nov 18, 11:00 am	Veteran's Recognition & Holiday Meal
Jan 12, 5:30 pm	Bunco & Poker Fundraiser
Feb 2, 5:30 pm	Bunco & Poker Fundraiser
Feb 10	Heart-to-Heart Dinner

Wildlife Entertainment

The wildlife at the Scout Lodge is particularly valued, and a continual source of entertainment. The lodge takes wildlife habitat maintenance seriously. It is our goal to provide a healthy and safe habitat—especially for our prized family of Western Pond turtles.

Besides regular sightings of the pond turtles, we watch Blue Heron, geese, elk (and calves), deer, bobcats, cougars, raccoons, possums, and skunks. Our cameras pick up curious critters nightly—with some of the most inquisitive expressions!



Philomath Scout Lodge
P O Box 662
Philomath OR 97370

Quilt Show & More

September was the month for the quilters to be displaying their talent. We had over 100 quilts displayed around the lodge of various sizes. The talent excelled along with stories behind the work written up to read along with visually seeing the crafts. Our vendors enjoyed the time being able to visit & sell their wares as well. Again the wonderment of the kitchen angels did fantastic to put together various menu items to have tantalized your taste buds after viewing the show. With the help from all those who entered quilts, our vendors & of course the patrons who attended the show....the fundraiser for the lodge raised over \$5300, which we were excited about--- However because of the generous anonymous donor match, the event topped over \$10,000 to apply to the loan of the lodge building. After finding out that---the excitement only excelled more!!

Friday Night-Fun Night

The 2nd Friday night each month is a great night to mark on your calendar for coming to enjoy a Friday Fun Night at the lodge with the Bunco/Poker fundraiser. Doors open at 5:30 to make sure your bellies are full from dinner, to start the rolling of the dice or the hand-holding of those cards at 6:00. There are numerous raffle prizes for entering your tickets in thru the evening & also those prizes for winners/losers of the games to be fair too. Our next night is Nov 10, so bring a friend & join us for Friday Night-Fun Night!!!

Right Around The Corner

The committee has been creating another great Heart to Heart fundraising evening planned for February 10th. We have been adding different parts to the evening each year & the newest one is a wine-wall raffle, only to be a small part of the entire evening of fun. The silent auction items are continuing to be outrageously challenging as the last bidder for some items. The dinner is one a kind & has been mouth-watering year after year. With the help from our younger generation of kids being our servers during dinner, dessert is not the only thing you'll be smiling about. It's great to see them being involved & having fun at the same time. Make time to support this fun event & bring your sweetie to share in the night (since it is close to Valentines' day!) If you've missed it in the past.....make sure you don't miss out this time—February 10th.



Queen size quilt will be displayed around town & tickets sold till the Heart to Heart event. Contact Kim for tickets (541)929-4319.